



Smart Design. Smarter Products.

SAMPLE OF CAD DELIVERABLES

This document serves to provide a overview of our internal procedures and samples of the deliverable products that we supply, as needed.

dewan@adbconsulting.co.za

068 941 4548

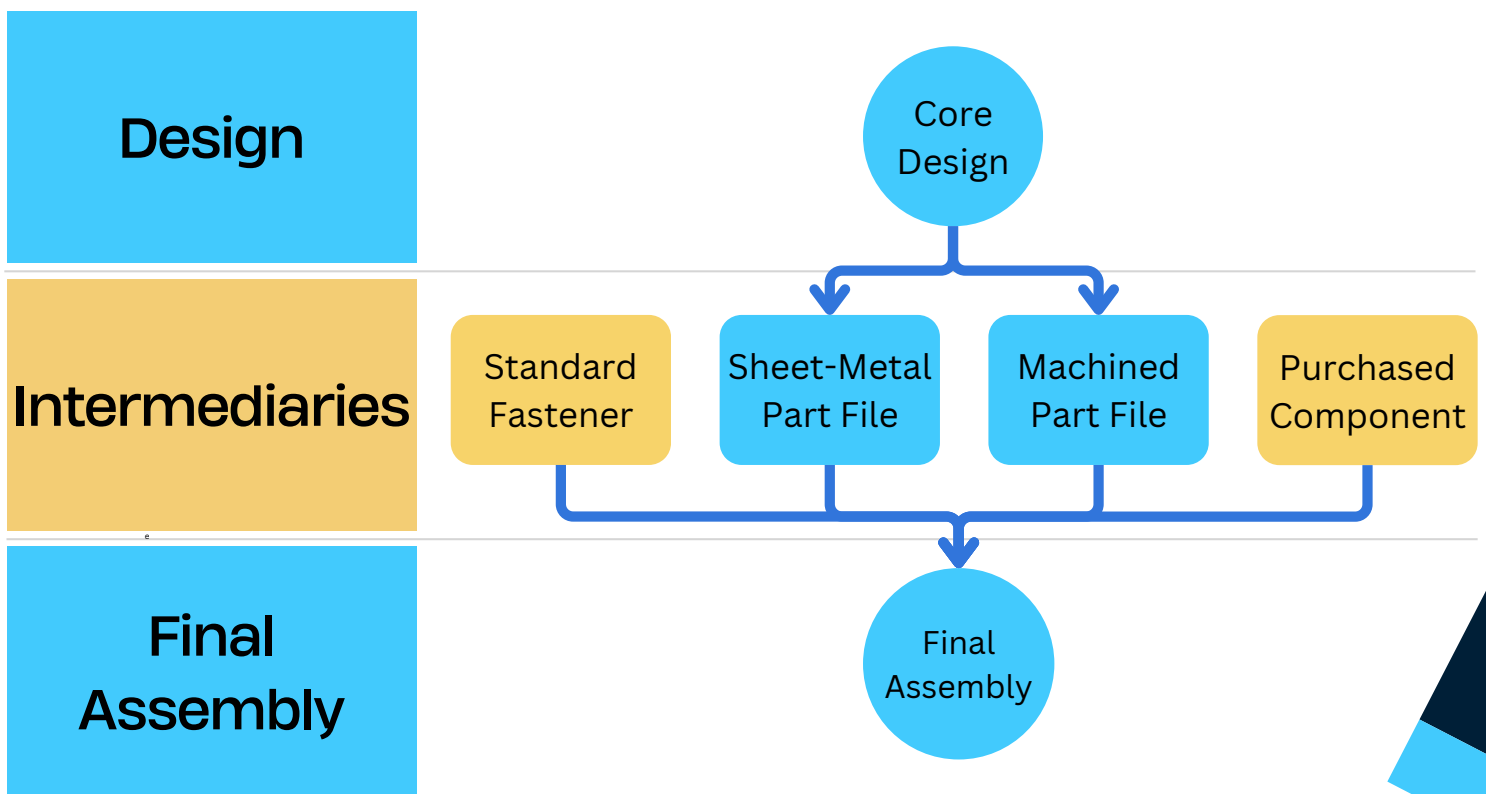
adbconsulting.co.za

Let's build something great together.

Why Choose Us?

Our Methodical, Top-Down design philosophy ensures fully parametric and easily adjustable and reviewable designs, leading to an over-all lower project design cost.

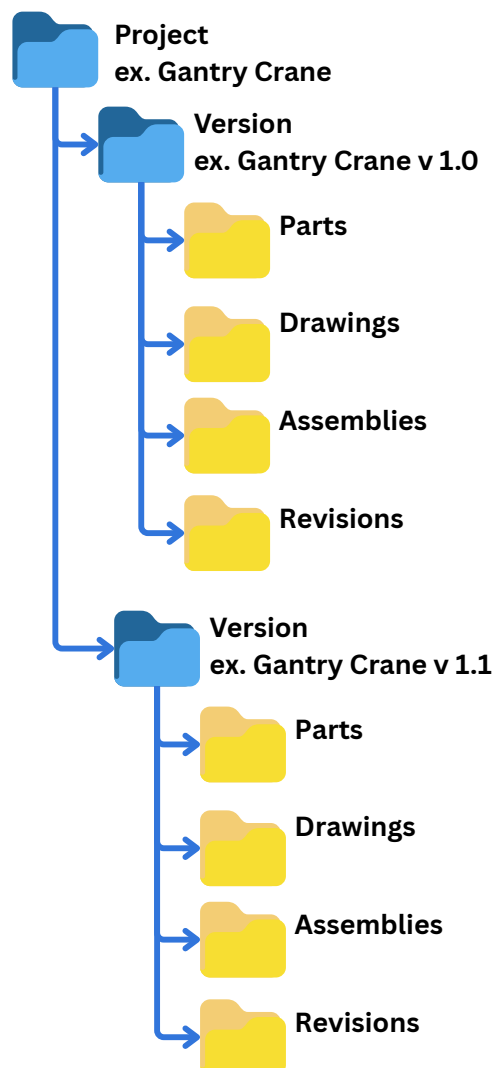
At the core of our design is the Main Geometry file, this contains all references and parts with in a project. All changes are made exclusively in this file. Changes then propagate to the final assembly through the intermediary part files



Revision History

Additionally, our experience based version control and file structure ensures that designs are completely isolated from each other and ensures that a change on v1.4 does not affect v1.2. This allows essentially endless back referencing and access to spare parts when client's require them.

The inclusion of the revision folder also gives a standardised location for any changes to be noted and kept, ensuring no changes ever get lost.

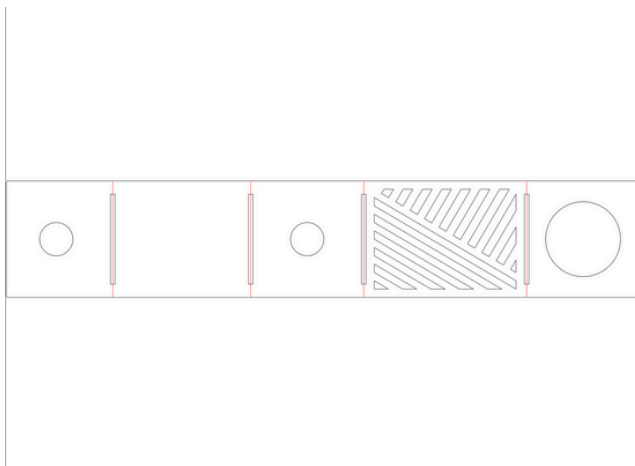


Sheet metal

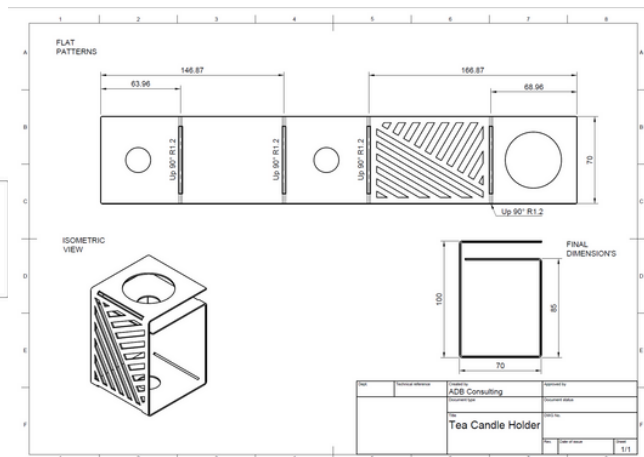
With most of our expertise laying in sheet metal fabrication, we are able to assist with most, if not all of the requirements for manufacturing products / parts in sheet metal. From industrial grade machinery, to bespoke indoor/outdoor cosmetic items.

1. **DXF Flat Pattern:** Up and Down Bend lines can be set to a specific layer, along with extents.
2. **Bend Drawing:** Showing bend dimensions, bend width, final dimensions and isometric view, where possible.

Flat Pattern (DXF)



Bend Drawing (PDF)



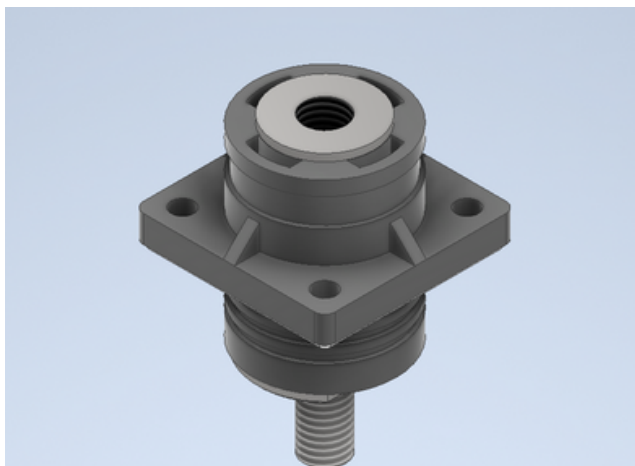
CAD Design

Whether it is for Milling, Turning, 3D Printing or all of the above, we can design and deliver CAD parts in any format required as well as provide detailed part drawings for manual manufacturing.

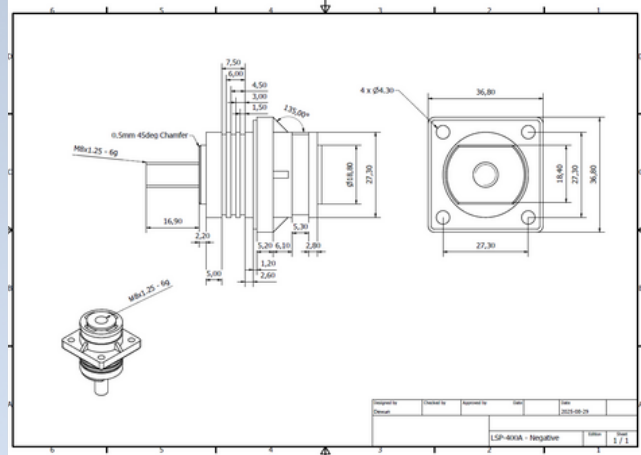
Part File: IPT, STEP, STL, IGES, PARASOLID and so many more.

Part Drawing: PDF, DWG, IDW

Part File

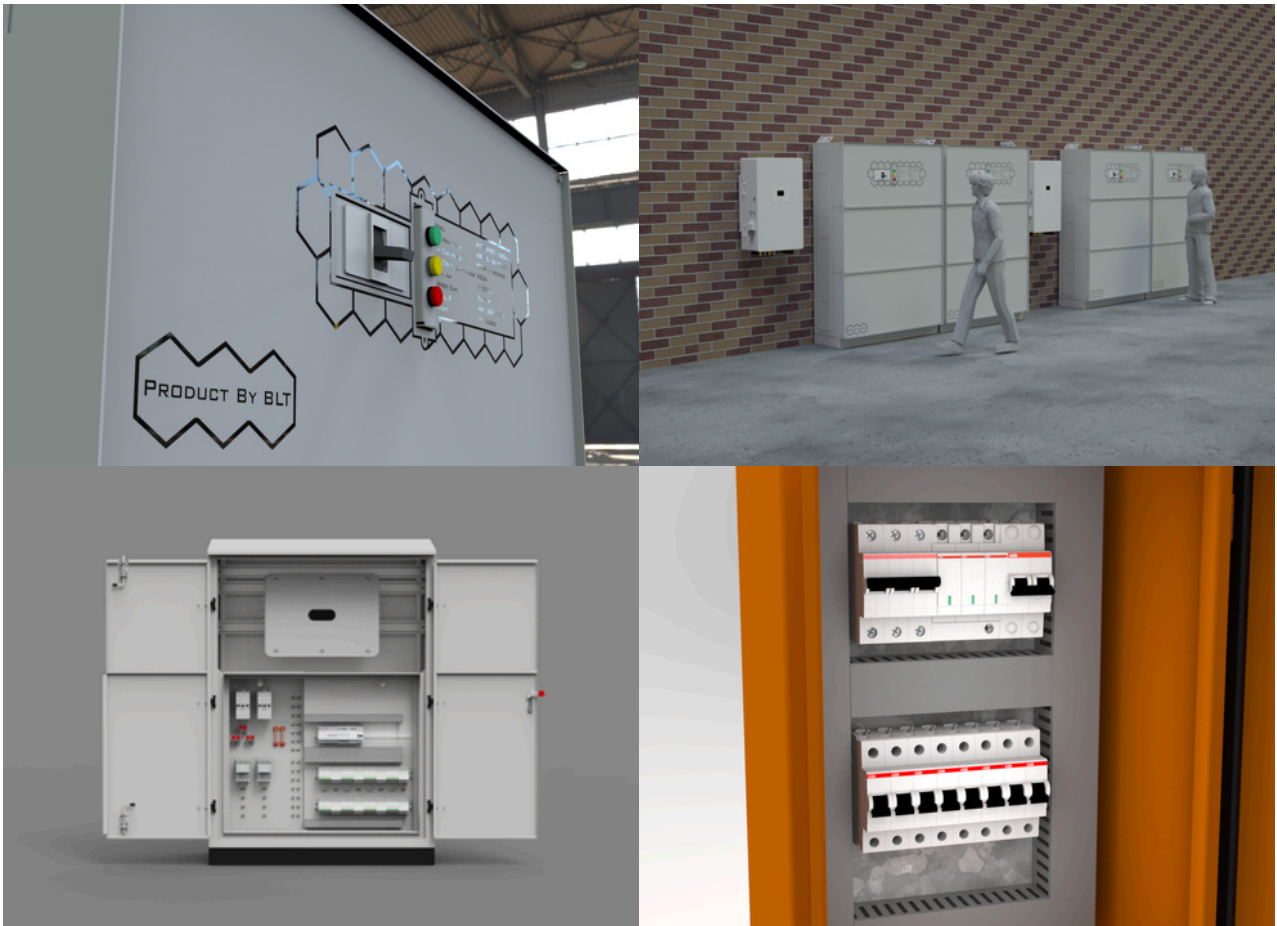


Part Drawing



Product Renders

We've noticed that in a lot of cases, where design work is needed, presentation images are also needed. As such we've started including product renders into our range of offerings, giving you a visually attractive representation of your product, before it's manufactured.



CAD Assemblies

Complex Assemblies for use in assembly instructions, video presentations, BOM's and renders.

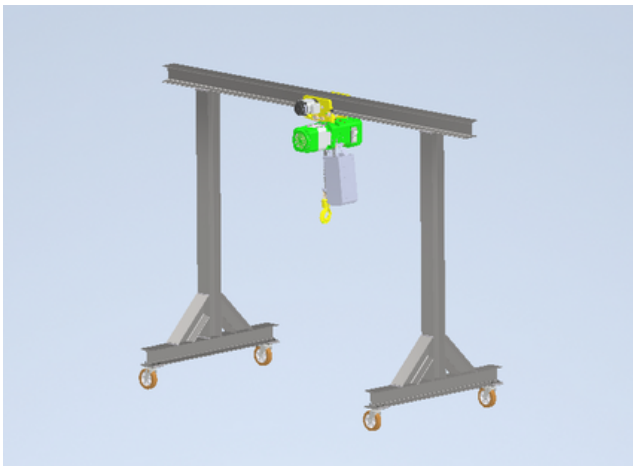
Assembly Instructions: PDF

Video Presentations: MP4

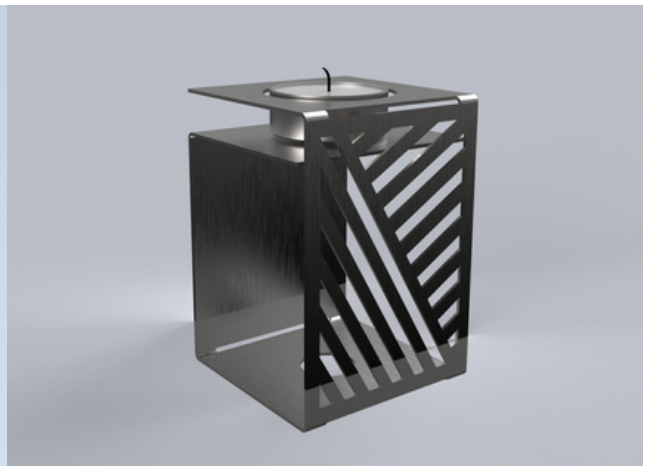
Renders: PNG / JPG

BOM's: Excel

Assembly File



Render



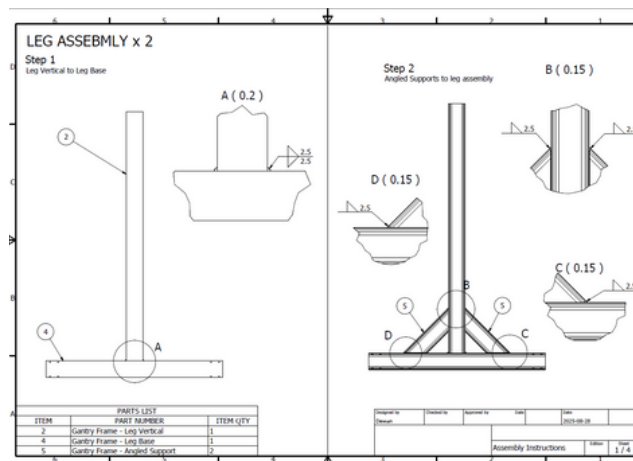
BOM

Thumbnail	BOM Structure	Unit	QTY	QTY	Stock Number	Description
	Purchased	Each		1		
	Purchased	Each		2		STEP AP214
	Purchased	Each		2		STEP AP214
	Purchased	Each		16		Plain washers - Nor
	Purchased	Each		16		Hexagon head bolt:

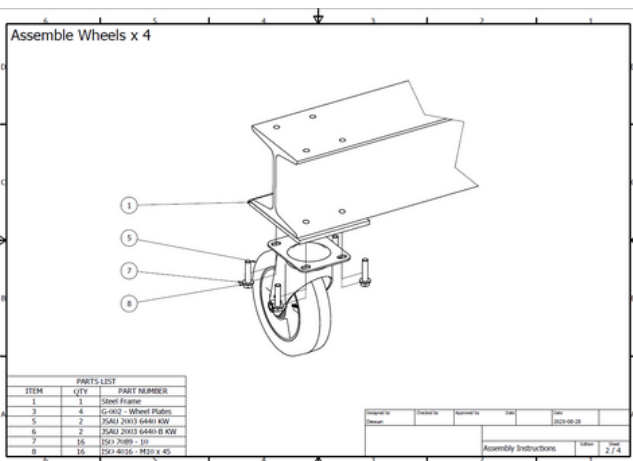
Assembly Instructions

The most vital part of any project; the assembly instructions. We specialize in creating clear and concise instructions ensuring optimal assembly time and no confusion on the manufacturing line. We provide step by step instructions, cutting lists and nesting recommendations

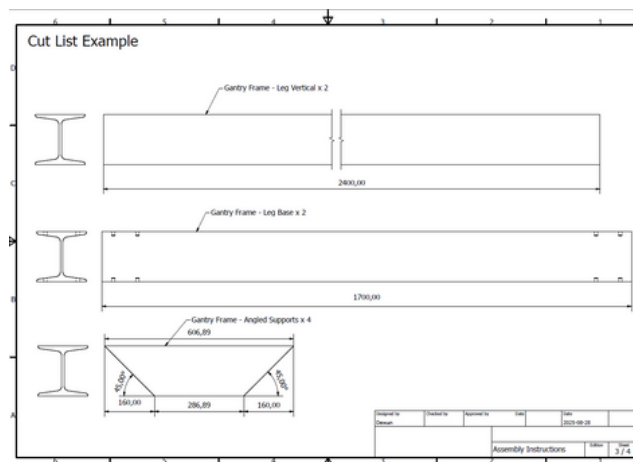
Step-By-Step



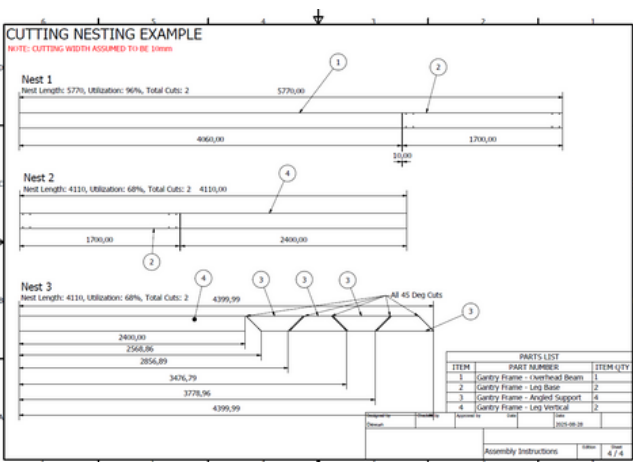
Detailed Instructions



Cut / Parts List



1D / Tube Nesting

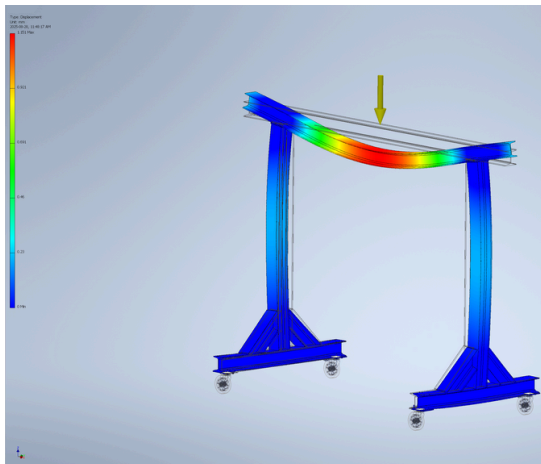


Load Simulations

A recent addition to our services; static load simulations for frames and bodies. This allows us to adjust a design on the fly to comply with requirements.

Note: These do not constitute an engineering sign off. A Certified Structural engineer must still be consulted for proper analysis and sign off.

Mesh Static Load Simulation's



Frame Static Load Simulation's

